

CSiXRevit Version 2020.0

© Copyright Computers and Structures, Inc., 2019

Notice Date: 2019-06-28

CSiXRevit Version 2020.0 is a new product that integrates into Autodesk Revit® 2020 to enable the exchange of information with CSI products ETABS, SAFE, and SAP2000. (See Version Compatibility below for specific versions).

PLEASE READ THIS FILE!

It contains important information that is more current than what is in the Manuals.

Contents

1. Installation Instructions for CSiXRevit Version 2020.0
2. Installation Instructions for License Manager 9.4
3. Version Compatibility
4. Changes from Version 2019.0

1. Installation Instructions for CSiXRevit Version 2020.0

CSiXRevit v2020.0 is available electronically as a full installation by download from the internet using the CSI Installation Wizard. Installing CSiXRevit 2020 will not uninstall older versions of CSiXRevit (2019 and earlier).

You must first install Autodesk Revit® 2020 before installing CSiXRevit on the same machine. Whether you are using a standalone license or a network license, CSiXRevit v2020.0 must be installed on each workstation where it will be used. Only 64-bit operating systems are supported by Autodesk Revit® 2020 and CSiXRevit 2020.

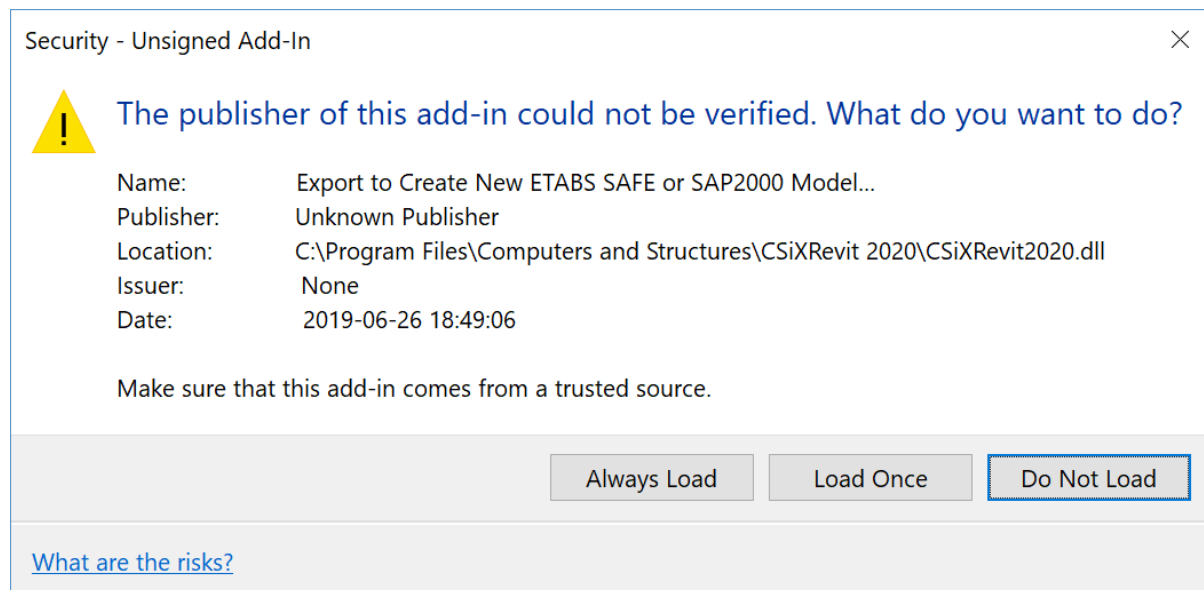
CSiXRevit can be installed on the same machine as ETABS, SAP2000, or SAFE, but this is not required. Data transfer files (*.EXR) exported by CSiXRevit on one machine can be moved to another machine for importing into ETABS, SAP2000, or SAFE, and vice-versa.

The CSiXRevit installation will create the CSiXRevit.addin file which loads CSiXRevit whenever a new session of Autodesk Revit® 2020 starts. The CSiXRevit.addin file will be placed in the non-user specific system folder “C:\ProgramData\Autodesk\Revit\Addins\2020”.

The following four commands will be available in Autodesk Revit® 2020 > Add-ins > External Tools after successful installation of CSiXRevit:

- Export to Create New ETABS SAFE or SAP2000 Model...
- Export to Update Existing ETABS SAFE or SAP2000 Model...
- Import to Create New Revit Project from ETABS SAFE or SAP2000...
- Import to Update Existing Revit Project from ETABS SAFE or SAP2000...

Important! User authorization is required to complete add-in integration with Revit. The first time you try to use one of these CSiXRevit commands from inside Revit, the form below will be displayed. Choose the “Always Load” option to perform a one-time authorization. We recommend that this be done during installation so that the end user does not have to perform this operation.



If the CSiXRevit.addin file gets corrupted or altered for any reason, you can recreate this file by running *XMLPluginFile.exe* as administrator. *XMLPluginFile.exe* can be found in the folder where CSiXRevit 2020 was installed.

Using the CSI Installation Wizard

Use the Installation Wizard to guide you step-by-step through the process of installation and licensing. Before installation, be sure you have your Activation Key available if you will be using a Standalone license. You should have received this by email from CSI or your dealer. If you will be using a Network license, it is necessary to have the licenses already activated on the license server that is accessible to the workstation. CSiXRevit 2020 will require a new activation key and cannot use the CSiXRevit 2019 activation key or license file.

To begin the CSI Installation Wizard, click this link:

<http://www.csiamerica.com/go/installation-wizard>

The Wizard will start and guide you through the process. The actual files needed for installation will be downloaded as necessary. An active internet connection is required throughout the installation and licensing process.

The license activation server ports are 80 and 443. If either of these ports is blocked, they need to be opened. Otherwise license activation will not be possible.

Windows User Account Control (UAC)

For recent versions of the Windows operating system (Windows 10, 8, and 7), User Account Control (UAC) is enabled by default. When UAC is turned on, you must explicitly give permission to any program that wants to use "Administrative" privileges. Any program that tries to use Administrative privileges without your permission will be denied access.

The installation of the CSiXRevit and the activation of the license require "Administrative" privileges to run. When installing CSiXRevit with UAC enabled, you should expect to be prompted to allow the installer access to system folders and Windows registry. Please allow it to continue so that the installation can complete.

2. Installation Instructions for License Manager 9.4

The information in this section does not apply if you are using Standalone licenses.

License Server

If you are already serving CSiXRevit 2020 licenses, you can skip this section on the License Server. Otherwise, please follow these instructions.

Sentinel RMS License Manager 9.4 and the *Sentinel RMS 9.4 Utilities* must both be installed on a license server, which is usually *not* one of the client workstations.

If you are already running RMS License Manager version 9.4, then you only need to add the CSiXRevit 2020 licenses. If you are running an older version of RMS, you will need to upgrade to version 9.4. If you are not yet running RMS at all, then you need to install the 9.4 version of the License Manager and the Utilities.

All of these options are best done using the [CSI Installation Wizard](#), which will guide you through the steps necessary to handle your specific situation. If this will include upgrading a previous version of RMS to 9.4, you should do this at a time when no users are running software that is using any of the existing licenses.

An active internet connection is required throughout the installation and licensing process. The license activation server ports are 80 and 443. If either of these ports is blocked, they need to be opened if you are activating a Network license.

If you prefer to do this without using the Wizard, further information can be found on the [CSI wiki page](#) for this topic.

On the client workstations

To speed up finding a network license when CSiXRevit is launched, you can create a text file, LMHOST.INI, and enter the network name or IP address of the machine that is running the License Manager. If you are serving licenses on more than one machine, enter each name or IP address on a separate line of text. Save this file to the folder where CSiXRevit is installed.

3. Version Compatibility

CSiXRevit v2020.0 is compatible with:

- ETABS (v15.0.0 and later)
- SAP2000 (v17.2.0 and later)
- SAFE (v14.0.0 and later)

4. Significant Changes from Version 2019.0

The following changes have been made from CSiXRevit v2019.0 to v2020.0.

Incident	Description
241587	<p>An incident was resolved which affected the import of sloped floor objects from ETABS or SAFE, and sloped area objects from SAP2000. They were imported in Revit with a slope ratio that was equal to the angle of the slope, instead of equal to its tangent. This resulted in a slight but noticeable slope discrepancy. The intended slope angle was listed in the properties of the imported Revit floor element, along with the editable Revit slope angle and it was left to the user to reconcile the two. The discrepancy was noted and its means of resolution was explained in the CSiXRevit Manual for area objects imported from SAP2000, but not for floor objects imported from ETABS or SAFE. The discrepancy is now gone.</p> <p>Several enhancements have been made to the import of floor, wall, column, beam, and brace objects from ETABS and SAFE, and of line and area objects from SAP2000. 1.) The GUIDs of the original ETABS, SAFE or SAP2000 objects were imported in Revit, but were always labeled "SAP2000 GUID" in the properties of the imported Revit elements. These GUIDs are now labeled "ETABS GUID", "SAFE GUID", or "SAP2000 GUID", depending on the program they originate from. 2.) The ETABS labels of ETABS floor, wall, column, beam, and brace objects were imported but were labeled "SAP2000 Name" in the properties of the imported Revit elements. They are now labeled "ETABS Label". 3.) The ETABS unique names of ETABS floor, wall, column, beam, and brace objects are now imported and listed in the properties of the imported Revit elements. Note that this last enhancement applies only to imports originating from ETABS 18.0.1.</p> <p>An enhancement has been made to the import of load combinations from ETABS. The Revit load combination state ("serviceability" or "ultimate") is now set for the imported load combinations. Note that this enhancement applies only to imports originating from ETABS 18.0.1.</p>
238383	CSiXRevit 2020 supports data exchange between Revit 2020 and either ETABS (v15.0.0 and later), SAP2000 (v17.2.0 and later), and SAFE (v14.0.0 and later).