

CSiXRevit Version 2019.0

© Copyright Computers and Structures, Inc., 2018

Notice Date: 2018-07-31

CSiXRevit Version 2019.0 is a new product that integrates into Autodesk Revit® 2019 to enable the exchange of information with CSI products ETABS, SAFE, and SAP2000. (See Version Compatibility below for specific versions).

PLEASE READ THIS FILE!

It contains important information that is more current than what is in the Manuals.

Contents

1. Installation Instructions for CSiXRevit Version 2019.0
2. Installation Instructions for License Manager 9.2
3. Version Compatibility
4. Changes from Version 2018.0

1. Installation Instructions for CSiXRevit Version 2019.0

CSiXRevit v2019.0 is available electronically as a full installation by download from the internet using the CSI Installation Wizard. Installing CSiXRevit 2019 will not uninstall older versions of CSiXRevit (2018 and earlier).

You must first install Autodesk Revit® 2019 before installing CSiXRevit on the same machine. Whether you are using a standalone license or a network license, CSiXRevit v2019.0 must be installed on each workstation where it will be used. Only 64-bit operating systems are supported by Autodesk Revit® 2019 and CSiXRevit 2019.

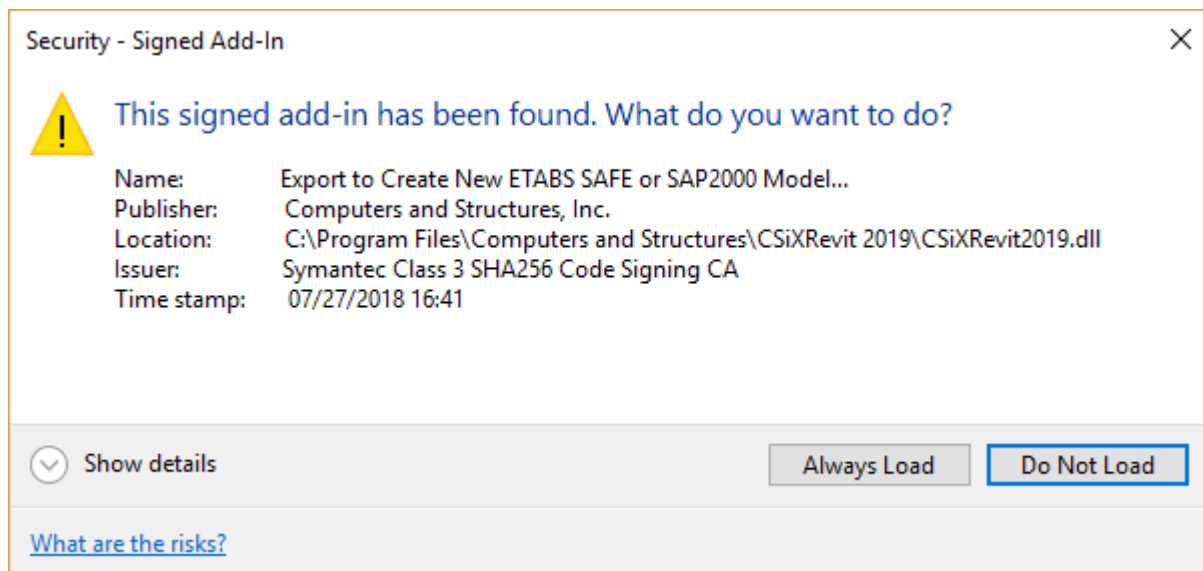
CSiXRevit can be installed on the same machine as ETABS, SAP2000, or SAFE, but this is not required. Data transfer files (*.EXR) exported by CSiXRevit on one machine can be moved to another machine for importing into ETABS, SAP2000, or SAFE, and vice-versa.

The CSiXRevit installation will create the CSiXRevit.addin file which loads CSiXRevit whenever a new session of Autodesk Revit® 2019 starts. The CSiXRevit.addin file will be placed in the non-user specific system folder “C:\ProgramData\Autodesk\Revit\Addins\2019”.

The following four commands will be available in Autodesk Revit® 2019 > Add-ins > External Tools after successful installation of CSiXRevit:

- Export to Create New ETABS SAFE or SAP2000 Model...
- Export to Update Existing ETABS SAFE or SAP2000 Model...
- Import to Create New Revit Project from ETABS SAFE or SAP2000...
- Import to Update Existing Revit Project from ETABS SAFE or SAP2000...

Important! User authorization is required to complete add-in integration with Revit. The first time you try to use one of these CSiXRevit commands from inside Revit, the form below will be displayed. Choose the “Always Load” option to perform a one-time authorization. We recommend that this be done during installation so that the end user does not have to perform this operation.



If the CSiXRevit.addin file gets corrupted or altered for any reason, you can recreate this file by running *XMLPluginFile.exe* as administrator. *XMLPluginFile.exe* can be found in the folder where CSiXRevit 2019 was installed.

Using the CSI Installation Wizard

Use the Installation Wizard to guide you step-by-step through the process of installation and licensing. Before installation, be sure you have your Activation Key available if you will be using a Standalone license. You should have received this by email from CSI or your dealer. If you will be using a Network license, it is necessary to have the licenses already activated on the license server that is accessible to the workstation. CSiXRevit 2019 will require a new activation key and cannot use the CSiXRevit 2018 activation key or license file.

To begin the CSI Installation Wizard, click this link:

<http://www.csiamerica.com/go/installation-wizard>

The Wizard will start and guide you through the process. The actual files needed for installation will be downloaded as necessary. An active internet connection is required throughout the installation and licensing process.

The license activation server ports are 80 and 443. If either of these ports is blocked, they need to be opened. Otherwise license activation will not be possible.

Windows User Account Control (UAC)

For recent versions of the Windows operating system (Windows 10, 8, and 7), User Account Control (UAC) is enabled by default. When UAC is turned on, you must explicitly give permission to any program that wants to use "Administrative" privileges. Any program that tries to use Administrative privileges without your permission will be denied access.

The installation of the CSiXRevit and the activation of the license require "Administrative" privileges to run. When installing CSiXRevit with UAC enabled, you should expect to be prompted to allow the installer access to system folders and Windows registry. Please allow it to continue so that the installation can complete.

2. Installation Instructions for License Manager 9.2

The information in this section does not apply if you are using Standalone licenses.

License Server

Sentinel RMS License Manager 9.2 and the *Sentinel RMS 9.2 Utilities* must both be installed on a license server, which is usually *not* one of the client workstations.

If you are already running RMS License Manager version 9.2, then you only need to add the CSiXRevit 2019 licenses. If you are running an older version of RMS, you will need to upgrade to version 9.2. If you are not yet running RMS at all, then you need to install the 9.2 version of the License Manager and the Utilities.

All of these options are best done using the [CSI Installation Wizard](#), which will guide you through the steps necessary to handle your specific situation. If this will include upgrading a previous version of RMS to 9.2, you should do this at a time when no users are running software that is using any of the existing licenses.

An active internet connection is required throughout the installation and licensing process. The license activation server ports are 80 and 443. If either of these ports is blocked, they need to be opened if you are activating a Network license.

If you prefer to do this without using the Wizard, further information can be found on the [CSI wiki page](#) for this topic.

On the client workstations

To speed up finding a network license when CSiXRevit is launched, you can create a text file, LMHOST.INI, and enter the network name or IP address of the machine that is running the License Manager. If you are serving licenses on more than one machine, enter each name or IP address on a separate line of text. Save this file to the folder where CSiXRevit is installed.

3. Version Compatibility

CSiXRevit v2019.0 is compatible with:

- ETABS (v15.0.0 and later)
- SAP2000 (v17.2.0 and later)
- SAFE (v14.0.0 and later)
- The API of “Autodesk Revit® 2019 Build 20180216_1515 (x64)”.

You must check the results carefully if you use other builds of Autodesk Revit®. The recommended build of Autodesk Revit® can be seen in CSiXRevit by using the menu command About.

4. Significant Changes from Version 2018.0

The following changes have been made from CSiXRevit v2018.0 to v2019.0.

Incident	Description
204063	An incident was resolved where the *.EXR file was written but had incomplete information and could not be imported into ETABS when the Revit project included column elements which: (1) did not have any structural material parameter assigned to them and (2) were instances of an angle column family whose name was not one of the predefined names listed in the CSiXRevit manual, and also had not been mapped to one of these in the user's CSiXRevit Family Name Mapping.txt file.
217165	An incident was resolved which affected the export of Revit framing elements with a geometric position that included a non-zero start Y offset value to ETABS, SAP2000, or SAFE. CSiXRevit exported such framing elements without taking into account their start Y offset values. When this occurred, the discrepancy between the Revit project and the ETABS, SAP2000, or SAFE model was visually obvious and all analysis results were consistent with the model. This affected all versions of CSiXRevit capable of exporting framing element geometric position start and end offsets. The start and end Z offset values, and the end Y offset values, of Revit framing elements were all otherwise exported correctly.
218387	An incident was resolved where a Revit project could not be exported at all to ETABS, SAP2000, or SAFE because the CSiXRevit commands which export and update Revit projects had been designed to run in read-only mode and the Autodesk supplied REX API commands called to assist with the export were attempting to modify the project. This occurred very rarely. Note that the active Revit project must now be open with full access rights when the Export to create a new ETABS, SAP2000 or SAFE model and Export to update a ETABS, SAP2000 or SAFE commands are run.
217477	The export of Revit frame elements with rigid links originating near, instead of precisely at, the end nodes of their Revit analytical models has been enhanced. In previous releases of CSiXRevit, such frame elements were imported into ETABS, SAP2000, and SAFE as line objects with joint locations and joint offsets that all matched the locations of the Revit rigid links. The elements are now imported as line objects with joint locations that match the locations of their Revit analytical model end nodes, and the joint offsets are adjusted so that they extend from the line object end nodes to the offset ends of the Revit rigid links.
219634	CSiXRevit 2019 supports data exchange between Revit 2019 and either ETABS (v15.0.0 and later), SAP2000 (v17.2.0 and later), and SAFE (v14.0.0 and later).