

CSiXRevit Version 2018.0

© Copyright Computers and Structures, Inc., 2017

Notice Date: 2017-08-28

CSiXRevit Version 2018.0 is a new product that integrates into Autodesk Revit® 2018 to enable the exchange of information with CSI products ETABS, SAFE, and SAP2000. (See Version Compatibility below for specific versions).

PLEASE READ THIS FILE!

It contains important information that is more current than what is in the Manuals.

Contents

1. Installation Instructions for CSiXRevit Version 2018.0
2. Installation Instructions for License Manager 8.6.0
3. Version Compatibility
4. Changes from Version 2017.0

1. Installation Instructions for CSiXRevit Version 2018.0

CSiXRevit v2018.0 is available electronically as a full installation by download from the internet using the CSI Installation Wizard. Installing CSiXRevit 2018 will not uninstall older versions of CSiXRevit (2017 and earlier).

You must first install Autodesk Revit® 2018 before installing CSiXRevit on the same machine. Whether you are using a standalone license or a network license, CSiXRevit 2018.0 must be installed on each workstation where it will be used. Only 64-bit operating systems are supported by Autodesk Revit 2018 and CSiXRevit 2018.

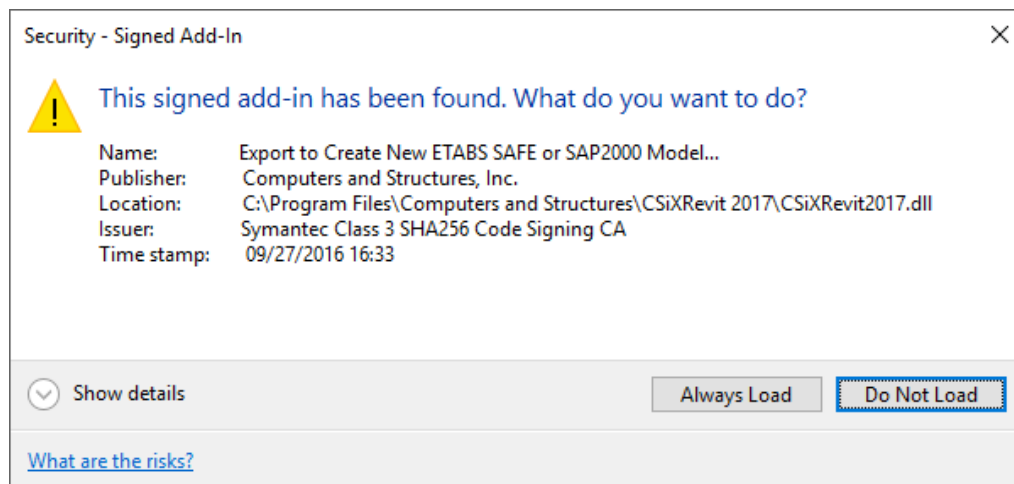
CSiXRevit can be installed on the same machine as ETABS, SAP2000, or SAFE, but this is not required. Data transfer files (*.EXR) exported by CSiXRevit on one machine can be moved to another machine for importing into ETABS, SAP2000, or SAFE, and vice-versa.

The CSiXRevit installation will create the CSiXRevit.addin file which loads CSiXRevit whenever a new session of Autodesk Revit® 2018 starts. The CSiXRevit.addin file will be placed in the non-user specific system folder “C:\ProgramData\Autodesk\Revit\Addins\2018”.

The following four commands will be available in Autodesk Revit® 2018 > Add-ins > External Tools after successful installation of CSiXRevit:

- Export to Create New ETABS, SAFE, or SAP2000 Model...
- Export to Update Existing ETABS, SAFE, or SAP2000 Model...
- Import to Create New Revit Project from ETABS, SAFE, or SAP2000...
- Import to Update Existing Revit Project from ETABS, SAFE, or SAP2000...

Important! User authorization is required to complete add-in integration with Revit. The first time you try to use one of these CSiXRevit commands from inside Revit, the form below will be displayed. Choose the “Always Load” option to perform a one-time authorization. We recommend that this be done during installation so that the end user does not have to perform this operation.



If the CSiXRevit.addin file gets corrupted or altered for any reason, you can recreate this file by running *XMLPluginFile.exe* as administrator. *XMLPluginFile.exe* can be found in the folder where CSiXRevit v2018 was installed.

Using the CSI Installation Wizard

Use the Installation Wizard to guide you step-by-step through the process of installation and licensing. Before installation, be sure you have your Activation Key available if you will be using a Standalone license. You should have received this by email from CSI or your dealer. If you will be using a Network license, it is necessary to have the licenses already activated on the license server that is accessible to the workstation. CSiXRevit 2018 will require a new activation key and cannot use the CSiXRevit 2017 activation key or license file.

To begin the CSI Installation Wizard, click this link:

<http://www.csiamerica.com/go/installation-wizard>

The Wizard will start and guide you through the process. The actual files needed for installation

will be downloaded as necessary. An active internet connection is required throughout the installation and licensing process.

The license activation server ports are 80 and 443. If either of these ports is blocked, they need to be opened. Otherwise license activation will not be possible.

Windows User Account Control (UAC)

For recent versions of the Windows operating system (Windows 10, 8, 7, and Vista), User Account Control (UAC) is enabled by default. When UAC is turned on, you must explicitly give permission to any program that wants to use "Administrative" privileges. Any program that tries to use Administrative privileges without your permission will be denied access.

The installation of the CSiXRevit and the activation of the license require "Administrative" privileges to run. When installing CSiXRevit with UAC enabled, you should expect to be prompted to allow the installer access to system folders and Windows registry. Please allow it to continue so that the installation can complete.

2. Installation Instructions for License Manager 8.6

The information in this section does not apply if you are using Standalone licenses.

Important: If you are using a network license and you have already installed the Sentinel RMS License Manager 8.6 Utilities described below, please re-install them now as these Utilities have been updated.

If you will be using a network license to run CSiXRevit 2018, the License Manager and Utilities should be installed on a license server, which is usually not one of the client workstations. The Installation Wizard provides the following installations:

Sentinel RMS License Manager 8.6

- If you have a version of Sentinel RMS License Manager v8.x.x older than 8.6 running, follow these steps:
 - Make a backup of the license file "lservrc", if present
 - To minimize possibility of interruption on the client, it is recommended no licenses are in use. However, this is not mandatory and most users will be unaffected.
 - Uninstall Sentinel RMS License Manager v8.x.x
 - Proceed with the installation of Sentinel RMS License Manager 8.6
 - Add the backed up "lservrc" file to the new installation
 - Follow the instructions below to install "Sentinel Utilities for License Manager 8.6" and activate your CSI Network licenses

- If you are already running the Sentinel RMS License Manager 8.6 or a newer version, you can skip this installation.
- If you have an earlier version of Sentinel RMS License v7.x.x running, you will need to leave this installed as v8.6 does not recognize v7.x.x licenses. Install the Sentinel RMS License Manager 8.6 on a different server.

Sentinel RMS 8.6 Utilities

- The Sentinel RMS 8.6 Utilities for License Manager 8.6 needs to be installed even if you are running a later version of License Manager newer than 8.6. The Utilities are to be installed on the same license server as the License Manager. During the installation you will be prompted for a Network Activation Key. You should have received this by email from CSI or your local CSI representative. Enter the key and click on Activate; a Network license will then be generated and copied to the server location or appended to an existing license at the server location. Note that the License Manager 8.6 needs to be running to activate the license.

On the client workstations

To speed up finding a network license when CSiXRevit is launched, you can create a text file, LMHOST.INI, and enter the network name or IP address of the machine that is running the License Manager. If you are serving licenses on more than one machine, enter each name or IP address on a separate line of text. Save this file to the folder where CSiXRevit is installed.

3. Version Compatibility

CSiXRevit v2018.0 is compatible with:

- ETABS (v15.0.0 and later)
- SAP2000 (v17.2.0 and later)
- SAFE (v14.0.0 and later)
- The API of “Autodesk Revit® 2018 Build 20170630_0700 (x64)”.

You must check the results carefully if you use other builds of Autodesk Revit®. The recommended build of Autodesk Revit® can be seen in CSiXRevit by using the menu command About.

4. Significant Changes from Version 2017.0

The following changes have been made from CSiXRevit v2017.0 to v2018.0.

Incident	Description
91964	The CSiXRevit manual has been updated to add further clarification regarding column cardinal points not being exported from ETABS and SAP2000 to Revit due to Revit not supporting the concept of cardinal points on columns.
95947	An incident was resolved where curved grid lines with a clockwise orientation exported from ETABS and SAFE were imported into Revit with a counter-clockwise orientation. This affected all versions of CSiXRevit. Curved grid lines are now imported into Revit with their original orientation.
98814	An incident was resolved which affected repeated round-tripping of Revit projects to and from ETABS, SAP2000, or SAFE when some of the Revit elements were copied with the Copy command. If a Revit project was exported to ETABS, SAP2000, or SAFE and then brought back into Revit, and some of the originally exported Revit elements were then copied in Revit, two problems could possibly occur: (1) If the project was subsequently re-exported to ETABS, SAP2000, or SAFE, the objects corresponding to the originally exported Revit elements would move to the locations and would be assigned the section properties and releases of the copied Revit elements (2) If the ETABS, SAP2000, or SAFE model was brought back one more time into Revit, the copied elements would move back to the locations of the original elements and would be assigned the same section properties and releases. This occurred because, when it brings a model back into Revit, CSiXRevit stores the original Revit element GUID identifiers of their ETABS, SAP2000, or SAFE counter-parts, and these GUID's would be duplicated when the elements were copied. The same two problems would occur if the project was initially created by importing from ETABS, SAP2000, or SAFE, and some of the imported elements were then copied in Revit. This affected all versions of CSiXRevit. When it occurred, the ETABS, SAP2000, or SAFE agreed with the model and the log file reported the changes made to the Revit project. This no longer occurs because CSiXRevit ties the object GUID's it assigns to Revit elements to their Revit unique ids and ignores the duplicate GUID's it finds on copied elements.
99491	An incident was resolved which affected the import of ETABS models into Revit when it was performed several times on different computers. When an ETABS model was imported into Revit on a given computer and the resulting Revit project file was copied to another computer, but the Revit shared parameter file the project referred to was not copied, the imported beam elements would acquire a duplicate pair of shared parameters for the beam end reactions, showing possibly different reaction values when the ETABS model was imported again. This affected all versions of CSiXRevit. The Revit shared parameters CSiXRevit creates for beam reactions are now assigned GUIDs, and this guarantees they are not duplicated when the above sequence of events happens.
99941	The CSiXRevit manual has been updated to add further clarification regarding the import of Revit walls into SAP2000. All planar wall geometries are now imported into SAP2000. However, non-planar walls with more than four sides are still not imported.
201895	CSiXRevit 2018 supports data exchange between Revit Structure 2018 and either ETABS (v15.0.0 and later), SAP2000 (v17.2.0 and later), and SAFE (v14.0.0 and later).