

CSiXRevit Version 2017.0

© Copyright Computers and Structures, Inc., 2016

Notice Date: 2016-11-02

CSiXRevit Version 2017.0 is a new product that integrates into Autodesk Revit® 2017 to enable the exchange of information with CSI products ETABS, SAFE, and SAP2000.
(See Version Compatibility below for specific versions).

PLEASE READ THIS FILE!

It contains important information that is more current than what is in the Manuals.

Contents

1. Installation Instructions for CSiXRevit Version 2017.0
2. Installation Instructions for License Manager 8.6.0
3. Version Compatibility
4. Changes from Version 2016.1

1. Installation Instructions for CSiXRevit Version 2017.0

CSiXRevit v2017.0 is available electronically as a full installation by download from the internet using the CSI Installation Wizard. Installing CSiXRevit 2017 will not uninstall older versions of CSiXRevit (2016 and earlier).

You must first install Autodesk Revit® 2017 before installing CSiXRevit on the same machine. Whether you are using a standalone license or a network license, CSiXRevit 2017.0 must be installed on each workstation where it will be used. Only 64-bit operating systems are supported by Autodesk Revit 2017 and CSiXRevit 2017.

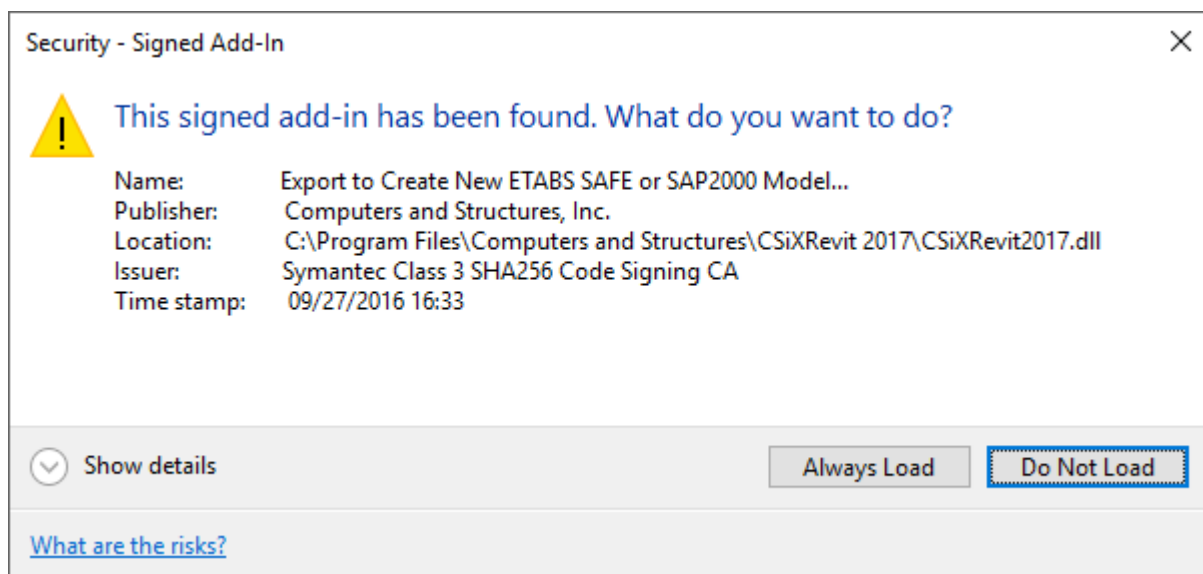
CSiXRevit can be installed on the same machine as ETABS, SAP2000 or SAFE, but this is not required. Data transfer files (*.EXR) exported by CSiXRevit on one machine can be moved to another machine for importing into ETABS, SAP2000, or SAFE, and vice-versa.

The CSiXRevit installation will create the CSiXRevit.addin file which loads CSiXRevit whenever a new session of Autodesk Revit® 2017 starts. The CSiXRevit.addin file will be placed in the non-user specific system folder “C:\ProgramData\Autodesk\Revit\Addins\2017”.

The following four commands will be available in Autodesk Revit® 2017 > Add-ins > External Tools after successful installation of CSiXRevit:

- Export to Create New ETABS, SAFE, or SAP2000 Model...
- Export to Update Existing ETABS, SAFE, or SAP2000 Model...
- Import to Create New Revit Project from ETABS, SAFE, or SAP2000...
- Import to Update Existing Revit Project from ETABS, SAFE, or SAP2000...

Important! User authorization is required to complete add-in integration with Revit. The first time you try to use one of these CSiXRevit commands from inside Revit, the form below will be displayed. Choose the “Always Load” option to perform a one-time authorization. We recommend that this be done during installation so that the end user does not have to perform this operation.



Note that SAP2000 v17.2.0 or later is required to be able to update a SAP2000 model from an Autodesk Revit® project and vice-versa.

If the CSiXRevit.addin file gets corrupted or altered for any reason, you can recreate this file by running *XMLPluginFile.exe* as administrator. *XMLPluginFile.exe* can be found in the folder where CSiXRevit v2017 was installed.

Using the CSI Installation Wizard

Use the Installation Wizard to guide you step-by-step through the process of installation and licensing. Before installation, be sure you have your Activation Key available if you will be using a Standalone license. You should have received this by email from CSI or your dealer. If you will be using a Network license, it is necessary to have the licenses already activated on the license server that is accessible to the workstation. CSiXRevit 2017 will require a new activation key and cannot use the CSiXRevit 2016 activation key or license file.

To begin the CSI Installation Wizard, click this link:

<http://www.csiamerica.com/go/installation-wizard>

The Wizard will start and guide you through the process. The actual files needed for installation will be downloaded as necessary. An active internet connection is required throughout the installation and licensing process.

The license activation server ports are 80 and 443. If either of these ports is blocked, they need to be opened. Otherwise license activation will not be possible.

Windows User Account Control (UAC)

For recent versions of the Windows operating system (Windows 10, 8, 7, and Vista), User Account Control (UAC) is enabled by default. When UAC is turned on, you must explicitly give permission to any program that wants to use "Administrative" privileges. Any program that tries to use Administrative privileges without your permission will be denied access.

The installation of the CSiXRevit and the activation of the license require "Administrative" privileges to run. When installing CSiXRevit with UAC enabled, you should expect to be prompted to allow the installer access to system folders and Windows registry. Please allow it to continue so that the installation can complete.

2. Installation Instructions for License Manager 8.6

The information in this section does not apply if you are using Standalone licenses.

Important: If you are using a network license and you have already installed the Sentinel RMS License Manager 8.6 Utilities described below, please re-install them now as these Utilities have been updated.

If you will be using a network license to run CSiXRevit 2017, the License Manager and Utilities should be installed on a license server, which is usually not one of the client workstations. The Installation Wizard provides the following installations:

Sentinel RMS License Manager 8.6

- If you have a version of Sentinel RMS License Manager v8.x.x older than 8.6 running, follow these steps:
 - Make a backup of the license file "lservrc", if present
 - To minimize possibility of interruption on the client, it is recommended no licenses are in use. However, this is not mandatory and most users will be unaffected.
 - Uninstall Sentinel RMS License Manager v8.x.x
 - Proceed with the installation of Sentinel RMS License Manager 8.6
 - Add the backed up "lservrc" file to the new installation

- Follow the instructions below to install “Sentinel Utilities for License Manager 8.6” and activate your CSI Network licenses
- If you are already running the Sentinel RMS License Manager 8.6 or a newer version, you can skip this installation.
- If you have an earlier version of Sentinel RMS License v7.x.x running, you will need to leave this installed as v8.6 does not recognize v7.x.x licenses. Install the Sentinel RMS License Manager 8.6 on a different server.

Sentinel RMS 8.6 Utilities

- The Sentinel RMS 8.6 Utilities for License Manager 8.6 needs to be installed even if you are running a later version of License Manager newer than 8.6. The Utilities are to be installed on the same license server as the License Manager. During the installation you will be prompted for a Network Activation Key. You should have received this by email from CSI or your local CSI representative. Enter the key and click on Activate; a Network license will then be generated and copied to the server location or appended to an existing license at the server location. Note that the License Manager 8.6 needs to be running to activate the license.

On the client workstations

To speed up finding a network license when CSiXRevit is launched, you can create a text file, LMHOST.INI, and enter the network name or IP address of the machine that is running the License Manager. If you are serving licenses on more than one machine, enter each name or IP address on a separate line of text. Save this file to the folder where CSiXRevit is installed.

3. Version Compatibility

CSiXRevit v2017.0 is compatible with:

- ETABS 2013, 2015, 2016 (v13.1.1 and later)
- SAP2000 (v15.2.1 and later)
- SAFE 2014 (v14.0.0 and later)
- The API of “Autodesk Revit® 2017 Build 20160225_1515 (x64)”.

Note that SAP2000 v17.2.0 or later is required to be able to update a SAP2000 model from an Autodesk Revit® project and vice-versa.

You must check the results carefully if you use other builds of Autodesk Revit®. The recommended build of Autodesk Revit® can be seen in CSiXRevit by using the menu command About.

4. Significant Changes from Version 2016.1

The following changes have been made from CSiXRevit v2016.1 to v2017.0.

Incident	Description
85957	An incident was resolved where walls exported to SAP2000 or ETABS from Revit, and then re-imported were moved in Revit even though they had not changed location in ETABS or SAP2000. This occurred when the analytical model of the Revit wall was not coincident with the wall centerline, and CSiXRevit moved the wall to the location of its analytical model. CSiXRevit now decided whether or not to move a wall when re-importing from ETABS or SAP2000 based on the location of the wall analytical model instead of the location of the wall itself. This affected all versions of CSiXRevit.
91912	CSiXRevit 2017 supports data exchange between Autodesk Revit® 2017 and either ETABS 2013, 2015, 2016 (v13.1.1 and later), SAP2000 (v15.2.1 and later), and SAFE 2014 (v14.0.0 and later).
95886	An incident was resolved in which the manual incorrectly indicated that grids were not imported into ETABS from Revit. The manual has been corrected to represent how the model transfer was already functioning.
96899	An incident was resolved which affected the location of story levels when a Revit project initially exported to ETABS, SAP2000, or SAFE and was subsequently re-imported into Revit and the elevations of the Revit project story level were relative to an arbitrary survey point instead of relative to the project origin. When the ETABS, SAP2000, or SAFE model was re-imported into Revit, the story levels were incorrectly shifted. This affected CSiXRevit 2016. A workaround was to select all objects prior to exporting from the ETABS, SAP2000, or SAFE model and then check the box for exporting selected objects only in the form which was then displayed.
96902	An incident has been resolved which affected the mapping from CSI products line object section properties to column and framing family types in Revit when a SAP2000, ETABS, or SAFE model was imported into Revit. If the column and family names in use in the Revit template or Revit project differed from the standard family names listed in the CSiXRevit Manual, the standard families were loaded into the Revit project when they contained types with one of the CSI section names and the resulting types were assigned to the column and framing elements, even though types with that name may have already been present in the project. This affected all versions of CSiXRevit.